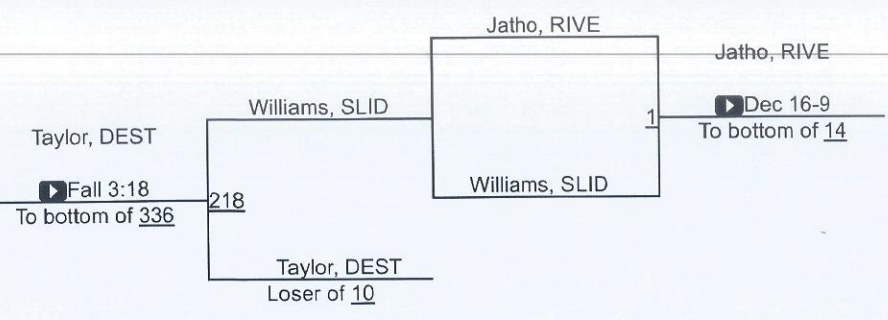


2025 Louisiana State Wrestling Championships

Division I Final Team Standings

Place	School/Winning Head Coach	Points	Place	School	Points	Place	School	Points	Place	School	Points
1	Jesuit/Jon Orillion	284.5	10	Acadiana	114	19	Zachary	75.5	28	Central	32.5
2	Brother Martin	262	11	Fontainebleau	109.35	20	Hahnville	71	29	Northshore	32
3	Holy Cross	221.5	12	Lafayette	99	21	Walker	58.5	30	Mandeville	28
4	St. Paul	203	T-13	Benton	91	22	Sulphur	53.5	31	John Ehret	19
5	Catholic	161	T-13	Live Oak	91	23	Byrd	48.5	32	Slidell	15.5
6	Dutchtown	148.5	T-15	Baton Rouge	58.5	T-24	Covington	45.5	33	Denham Springs	13
7	Chalmette	141	T-15	Parkway	85.5	T-24	Haughton	45.5	34	Bonnabel	11
8	East Ascension	136	17	Airline	81	26	Terrebonne	45	35	H.L. Bourgeois	10
9	St. Amant	120	18	Southside	79.5	27	Destrehan	37.5	36	Riverdale	9

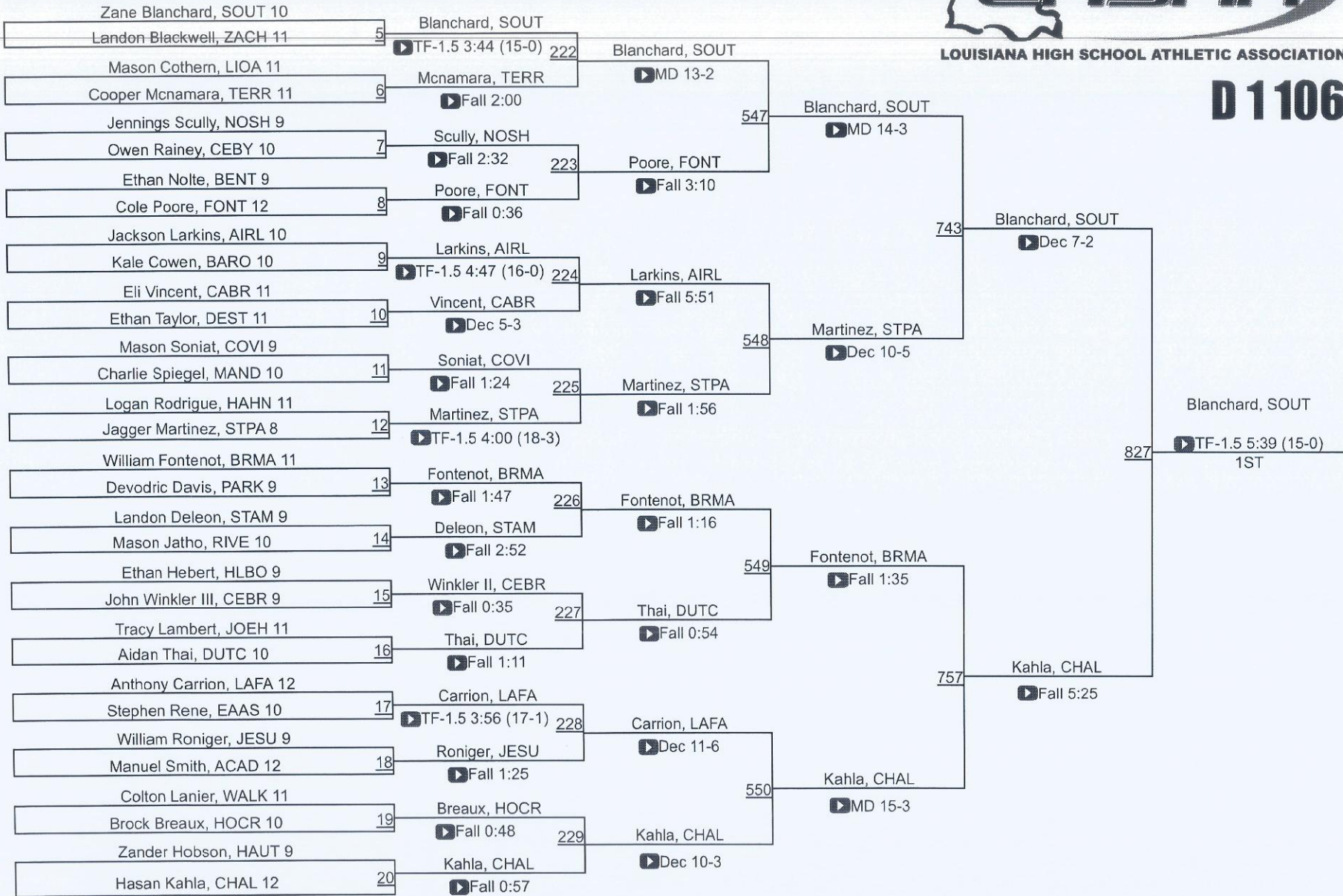


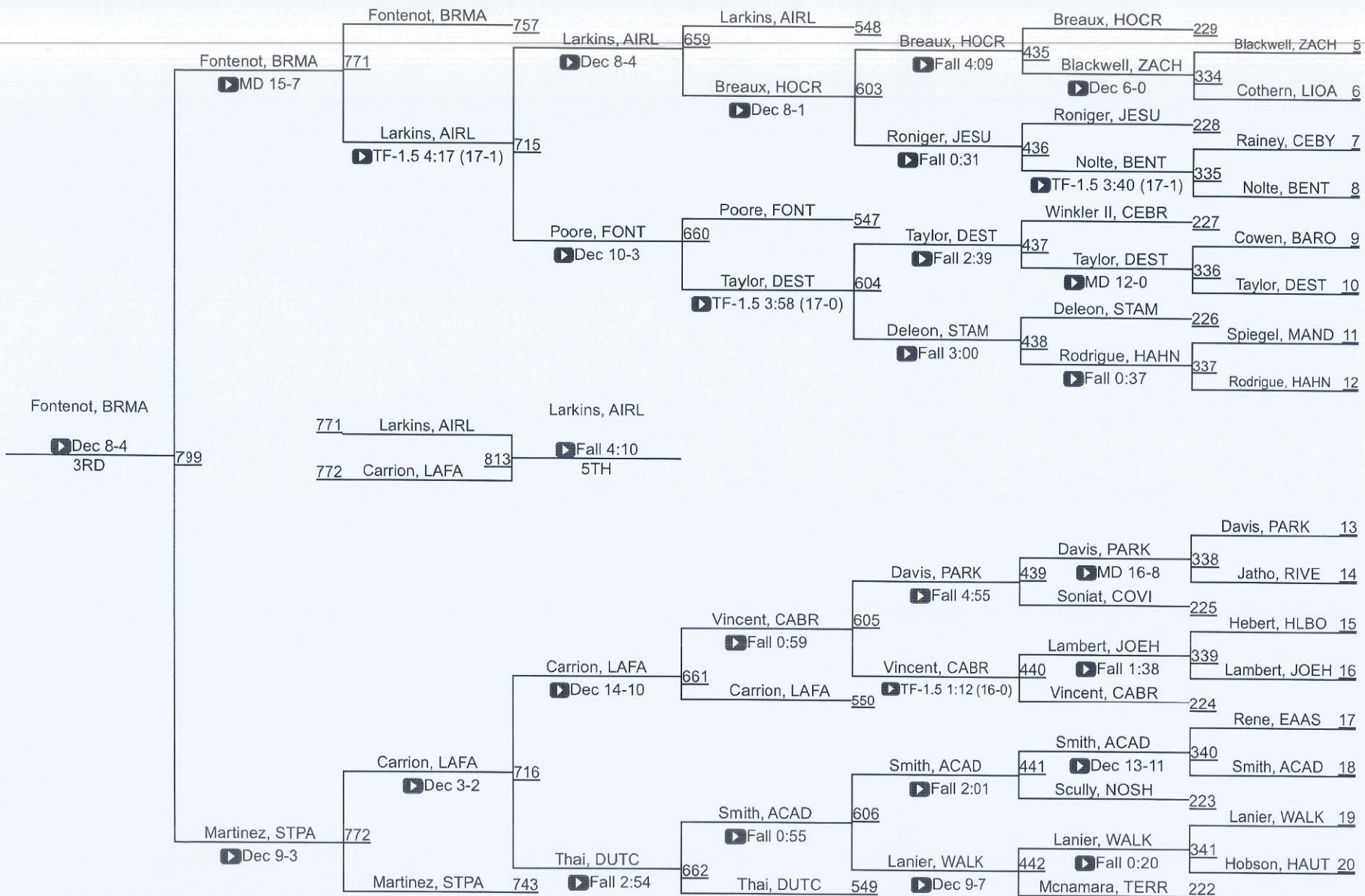
LHSAA State Championships



LOUISIANA HIGH SCHOOL ATHLETIC ASSOCIATION

D 1106



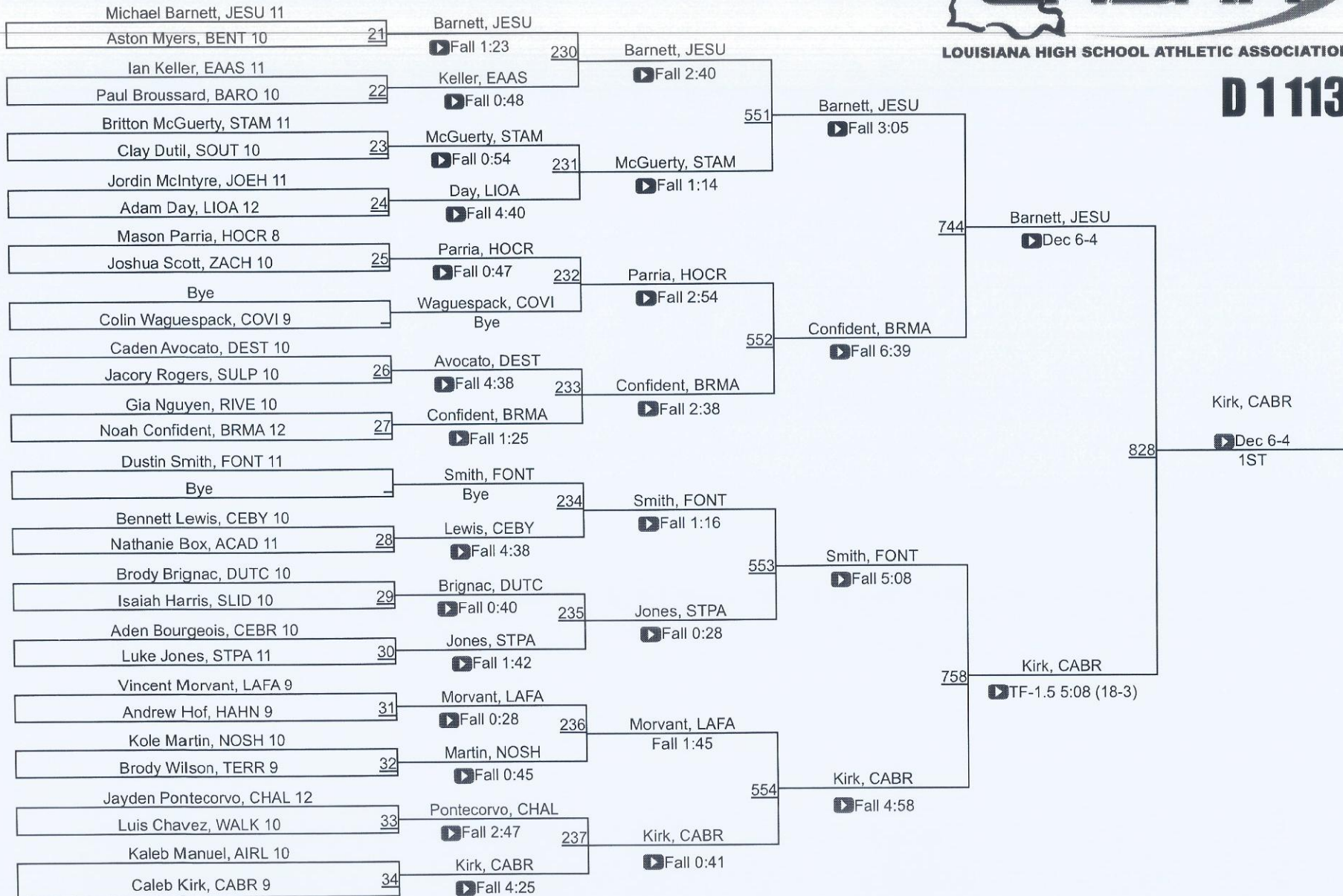


LHSAA State Championships

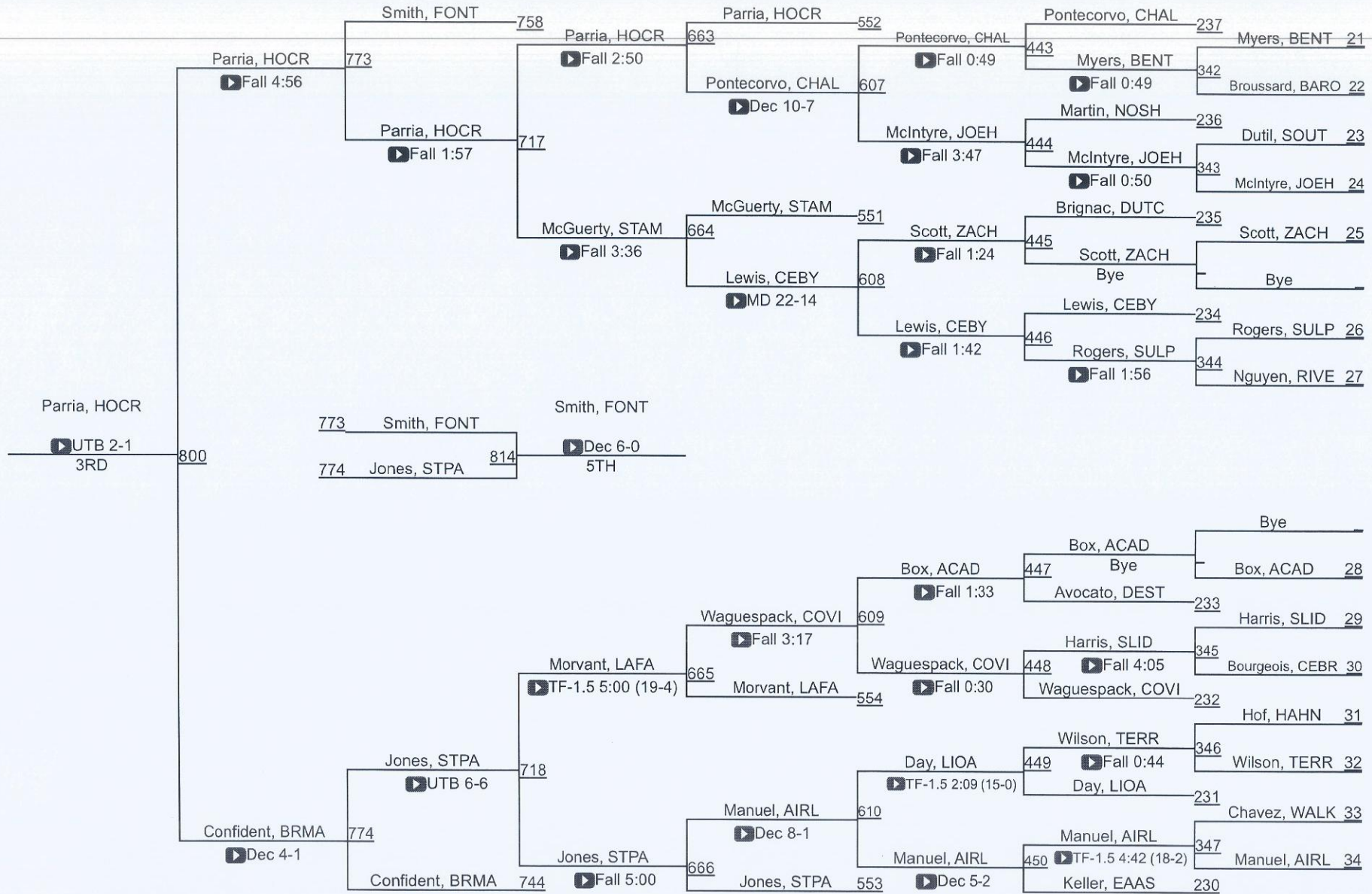


LOUISIANA HIGH SCHOOL ATHLETIC ASSOCIATION

D 1 113



D 1113

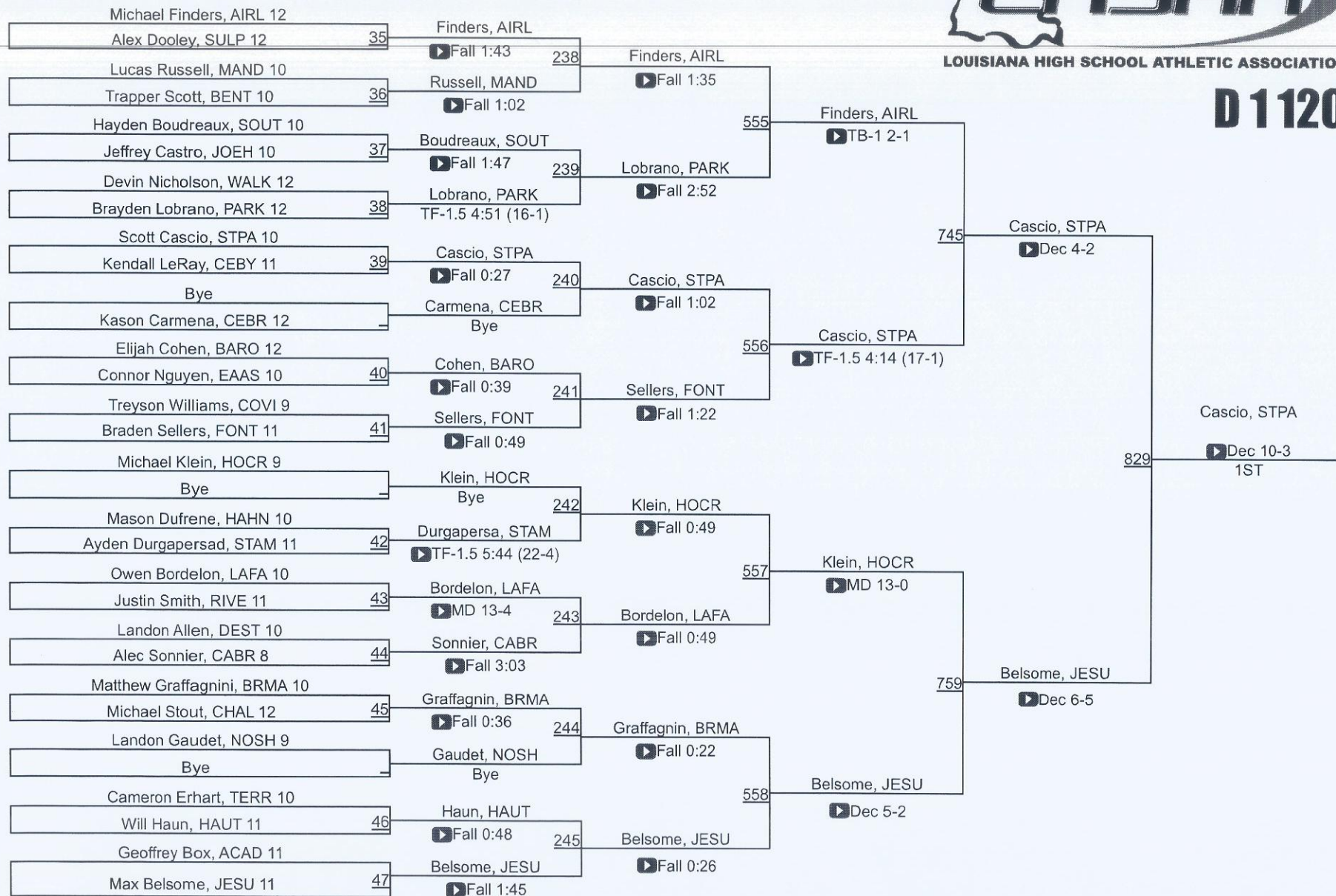


LHSAA State Championships



LOUISIANA HIGH SCHOOL ATHLETIC ASSOCIATION

D 1120



LHSAA State Championships



LOUISIANA HIGH SCHOOL ATHLETIC ASSOCIATION

D 1126

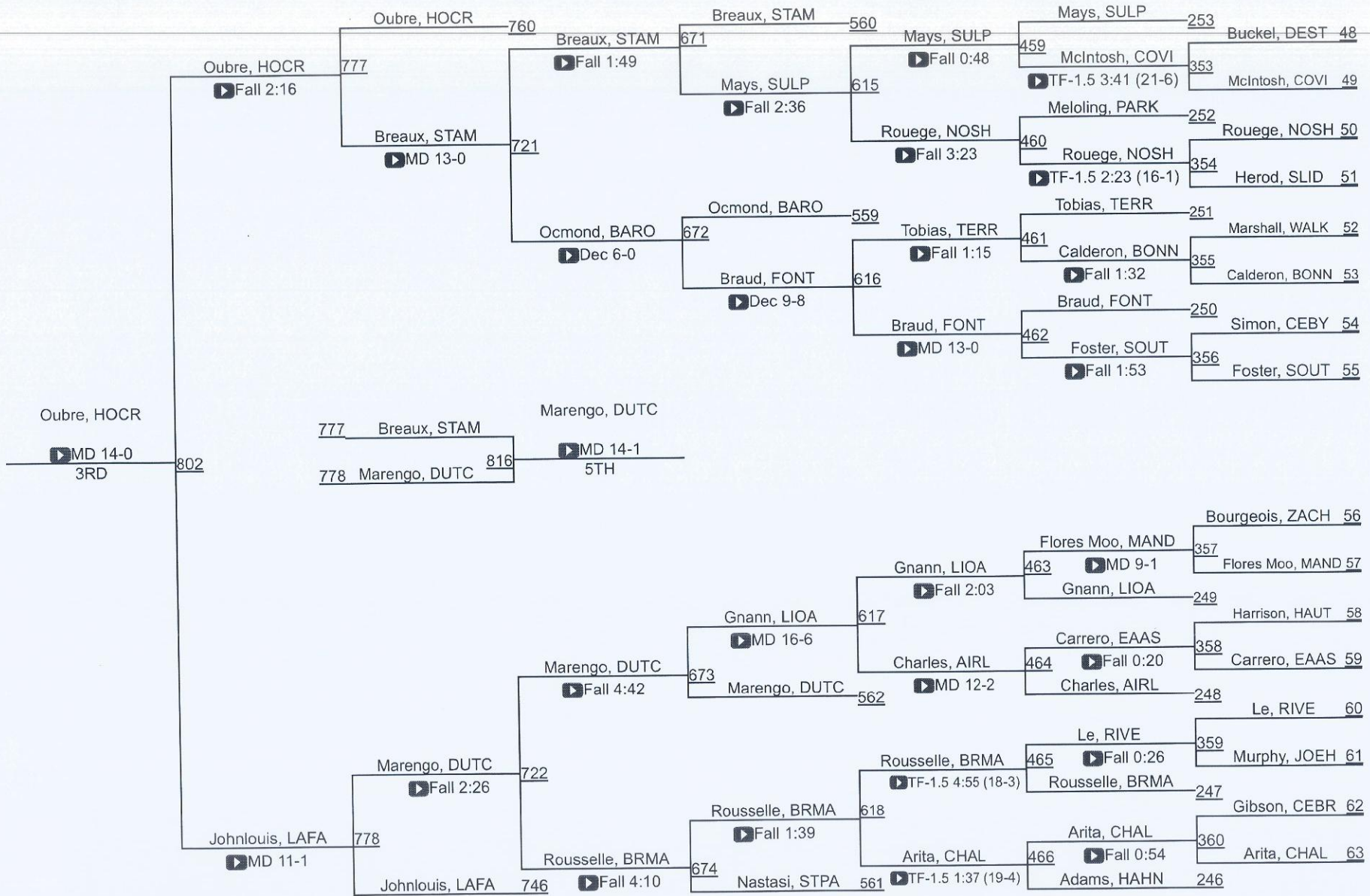
Rank	Name	Team	Time	Notes
48	Cathan Buckel	DEST 9		
49	Etienne Adams	HAHN 12		
50	Bryce Rouege	NOSH 9		
51	Ryder Rousselle	BRMA 9		
52	Jacob Marshall	WALK 11		
53	Wesley Calderon	BONN 12		
54	Rylan Gnann	LIOA 10		
55	Johnatha Johnlouis	Lafa 12		
56	Gabriel Bourgeois	ZACH 11		
57	Aaron Braud	FONT 11		
58	J'den Harrison	HAUT 10		
59	Rhett Nastasi	STPA 12		
60	Tus Le	RIVE 10		
61	Christia Meloling	PARK 10		
62	Brennan Mays	SULP 12		
63	Mark Evans	CABR 10		

Rank	Name	Team	Time	Notes
246	Harris, JESU	Harris, JESU	Fall 1:39	
247	Ocmond, BARO	Ocmond, BARO	TF-1.5 4:06 (17-2)	
248	Breaux, STAM	Breaux, STAM	Fall 1:00	
249	Johnlouis, LAFA	Johnlouis, LAFA	Fall 1:17	
250	Oubre, HOOCR	Oubre, HOOCR	Fall 1:32	
251	Nastasi, STPA	Nastasi, STPA	TF-1.5 1:14 (16-1)	
252	Marengo, DUTC	Marengo, DUTC	TF-1.5 5:58 (17-2)	
253	Evans, CABR	Evans, CABR	TF-1.5 4:57 (16-1)	

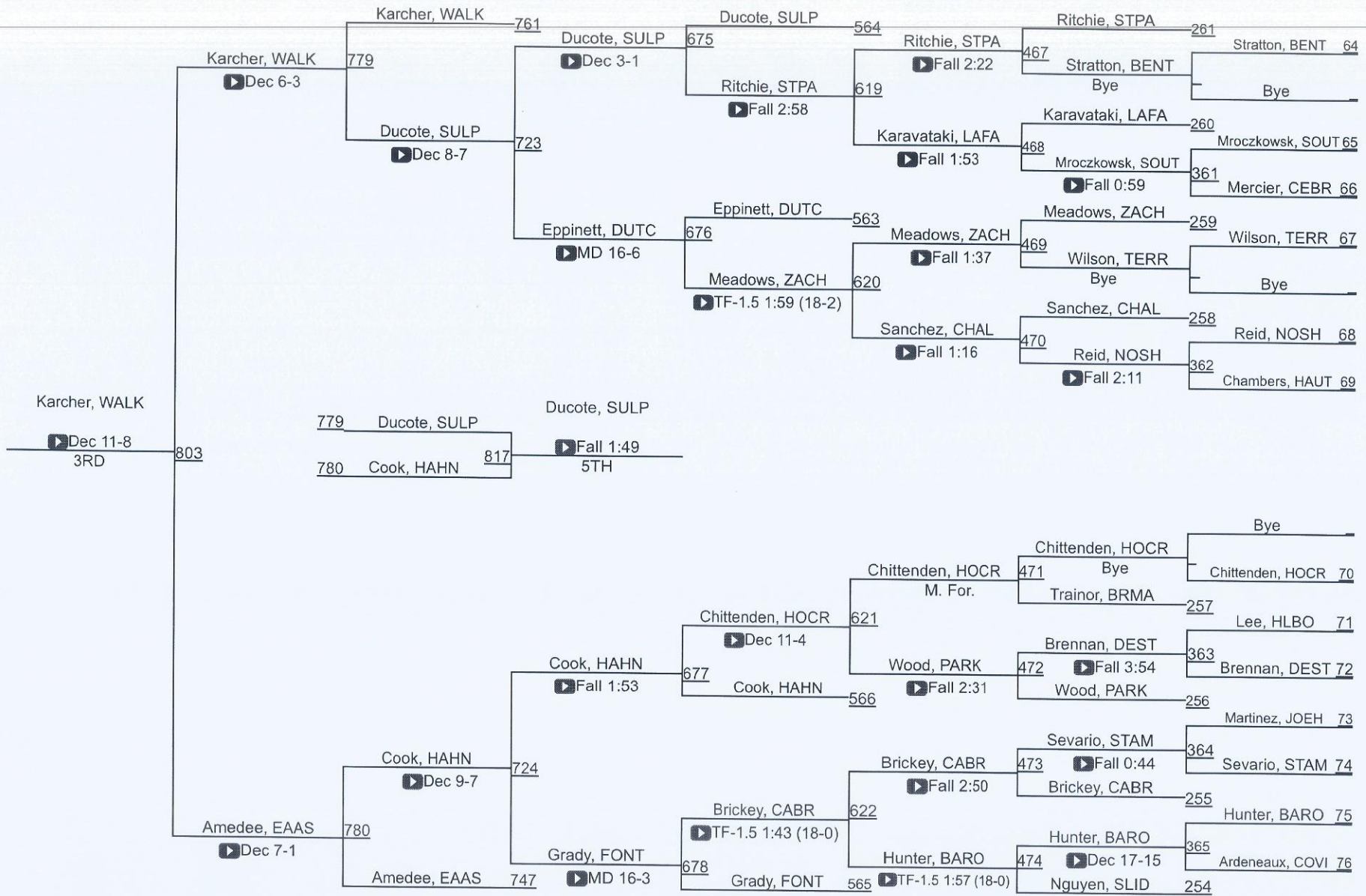
Rank	Name	Team	Time	Notes
559	Harris, JESU	Harris, JESU	Fall 2:58	
560	Johnlouis, LAFA	Johnlouis, LAFA	Dec 8-6	
561	Oubre, HOOCR	Oubre, HOOCR	MD 11-2	
562	Evans, CABR	Evans, CABR	TF-1.5 2:37 (15-0)	

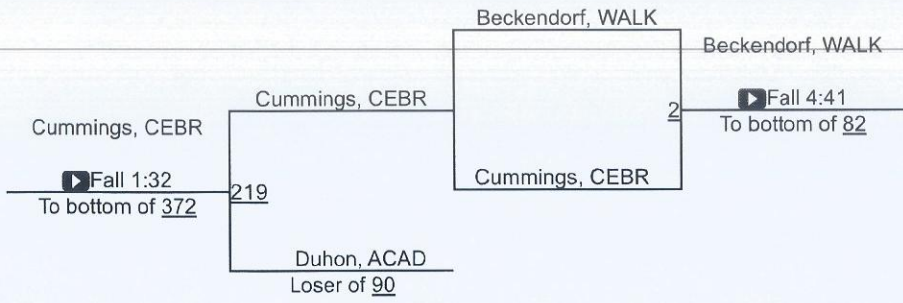
Rank	Name	Team	Time	Notes
746	Harris, JESU	Harris, JESU	MD 9-0	
760	Evans, CABR	Evans, CABR	Dec 3-1	
830	Harris, JESU	Harris, JESU	MD 11-3 1ST	

D 1126



D 1132



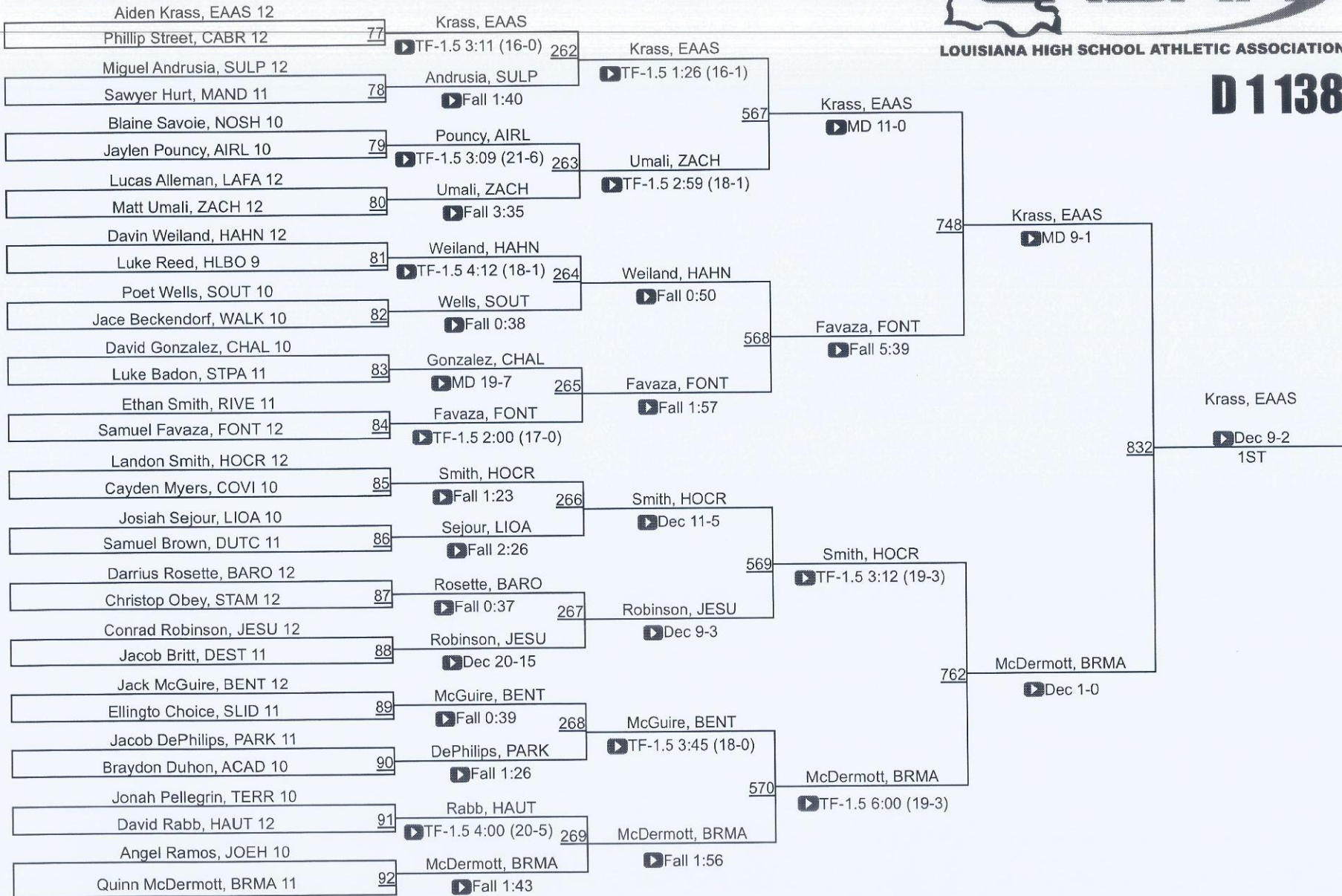


LHSAA State Championships



LOUISIANA HIGH SCHOOL ATHLETIC ASSOCIATION

D 1138

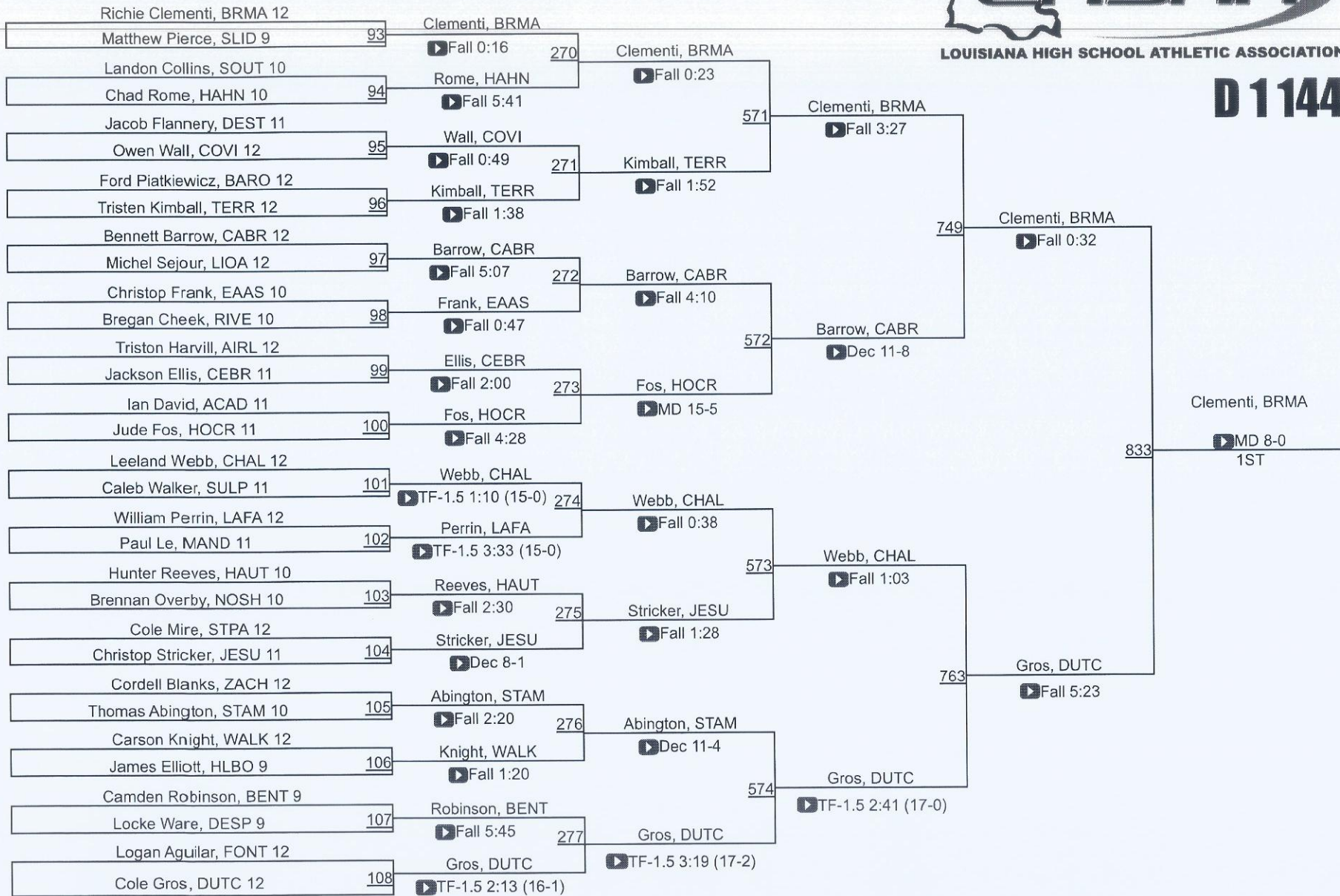


LHSAA State Championships

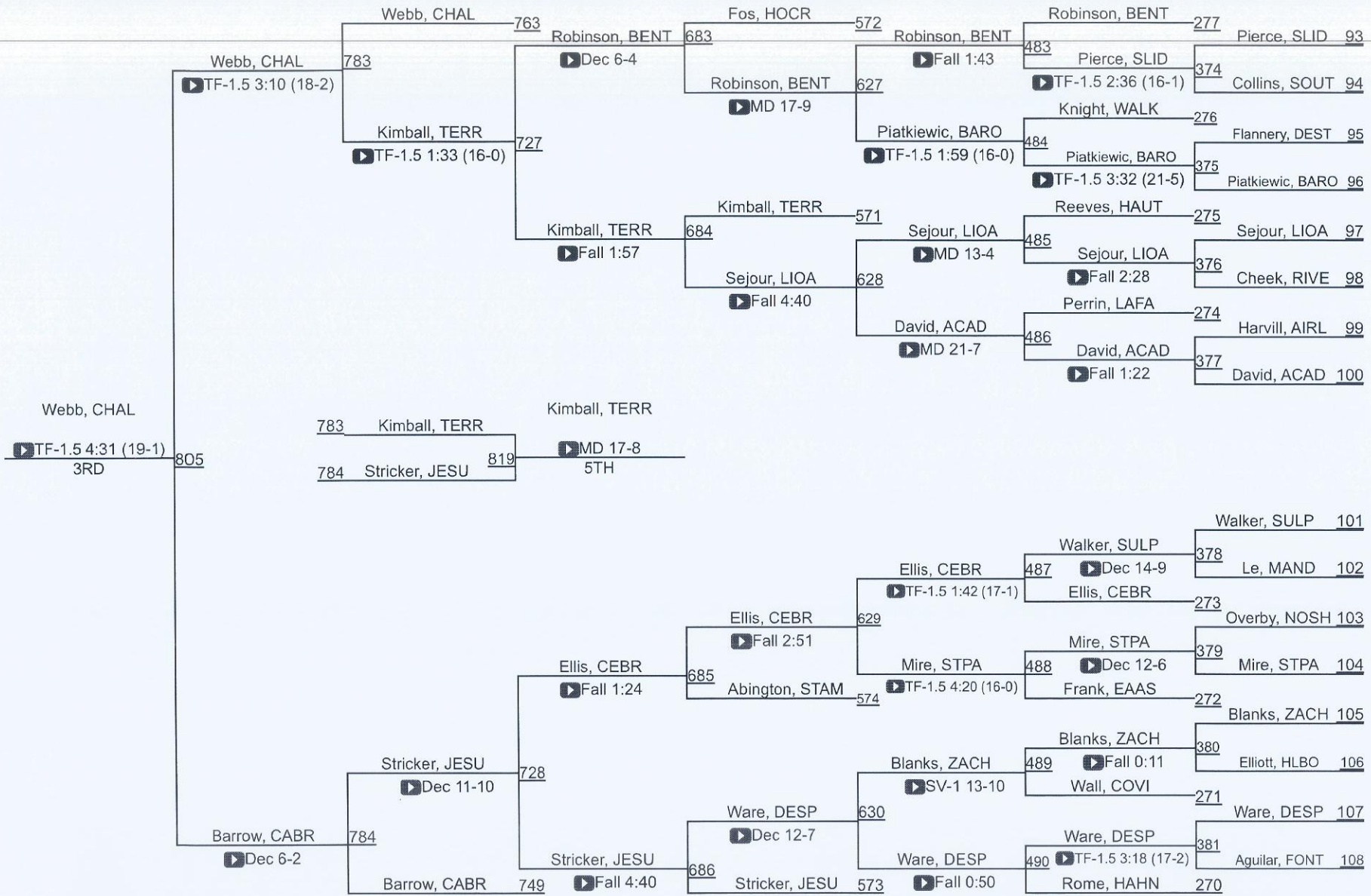


LOUISIANA HIGH SCHOOL ATHLETIC ASSOCIATION

D 1144



D 1144

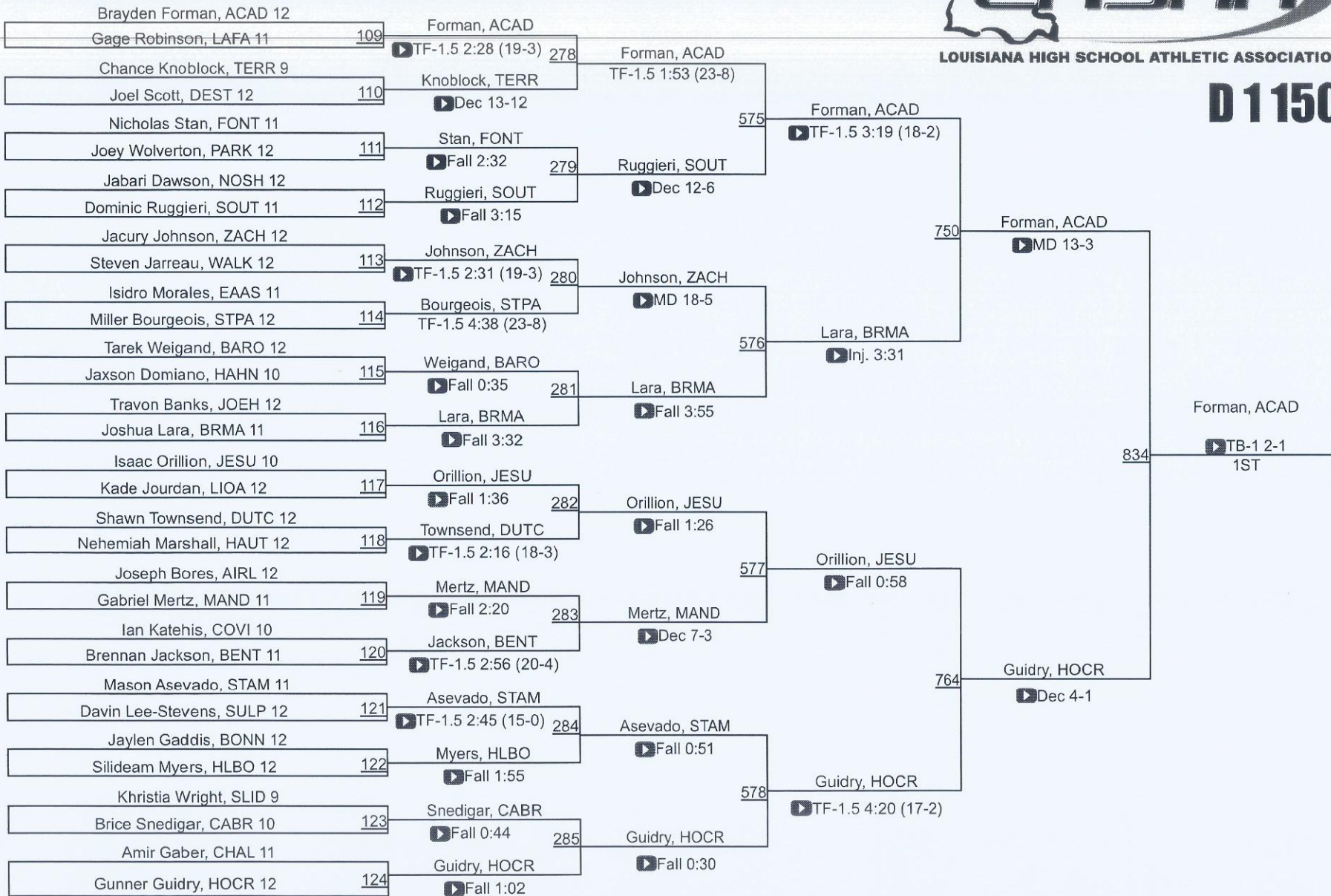


LHSAA State Championships

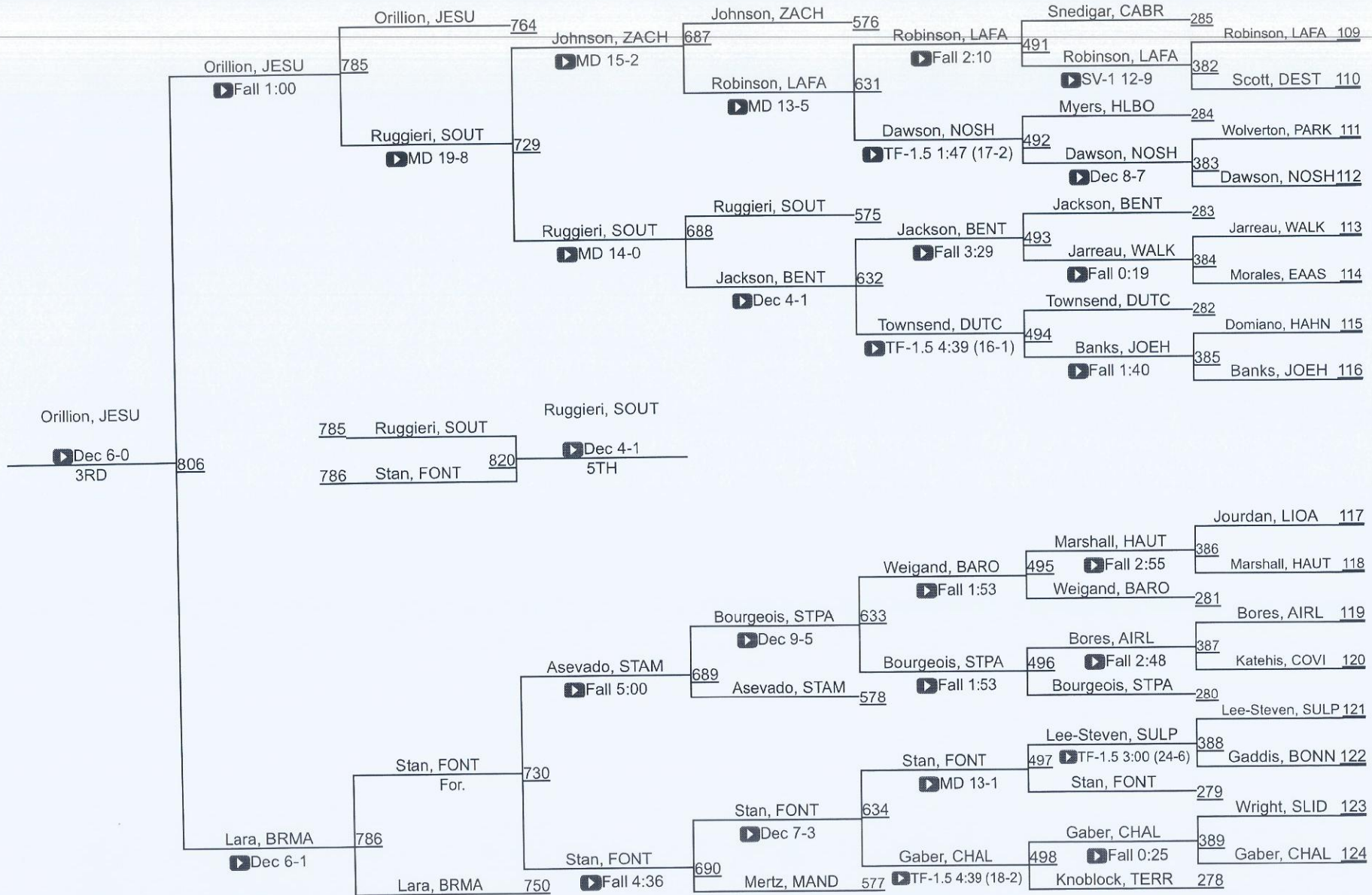


LOUISIANA HIGH SCHOOL ATHLETIC ASSOCIATION

D 1150



D 1150

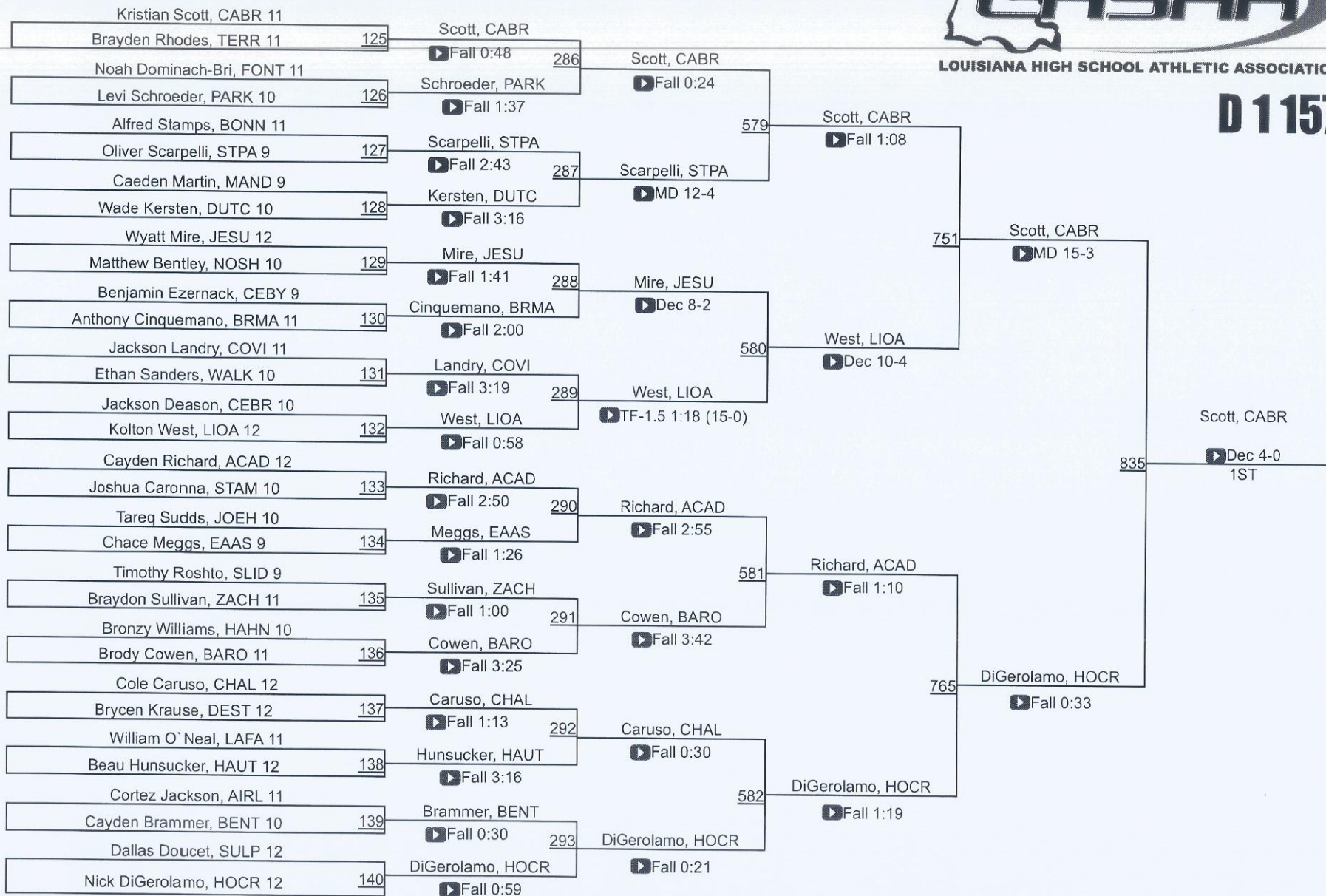


LHSAA State Championships

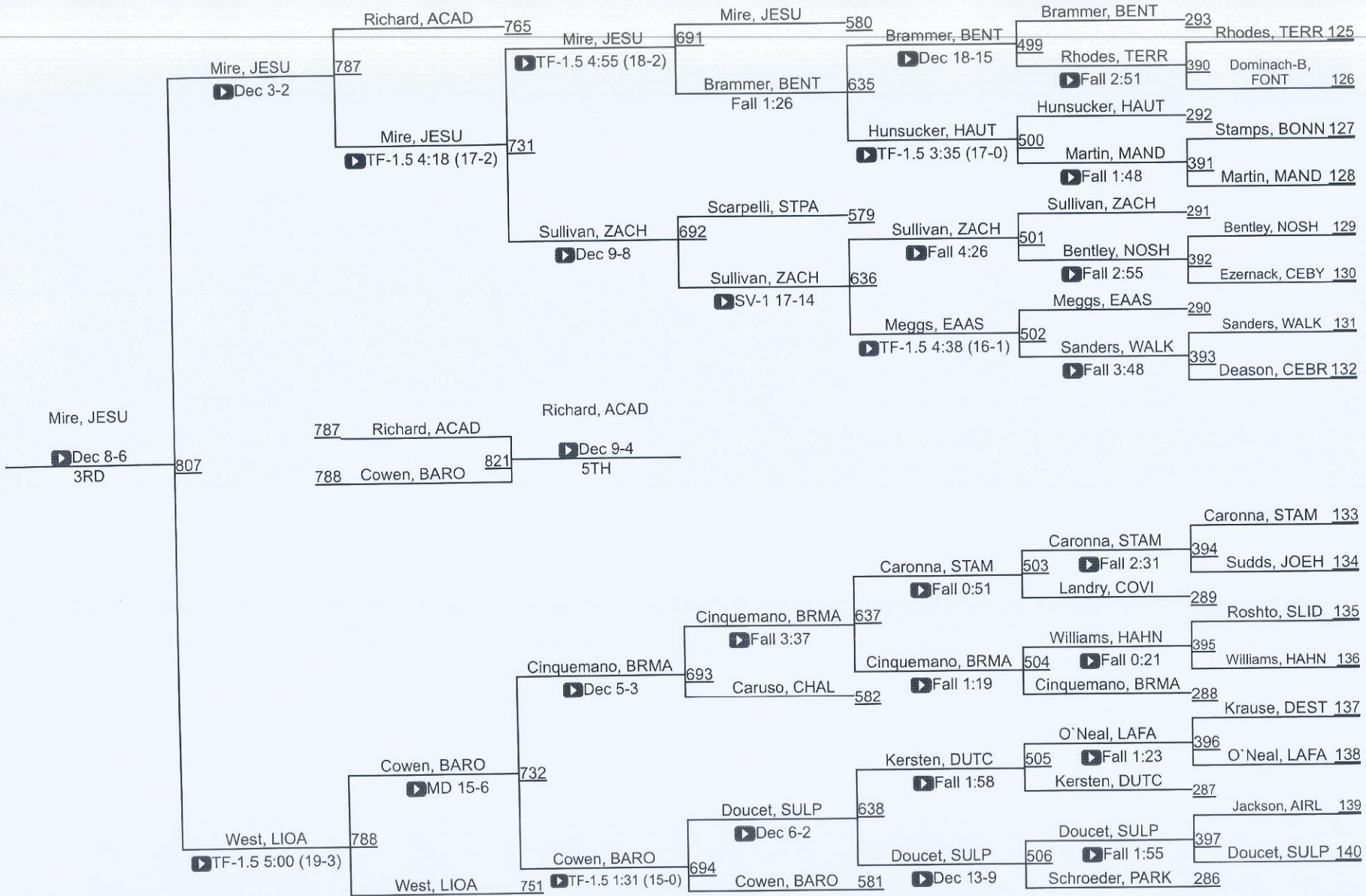


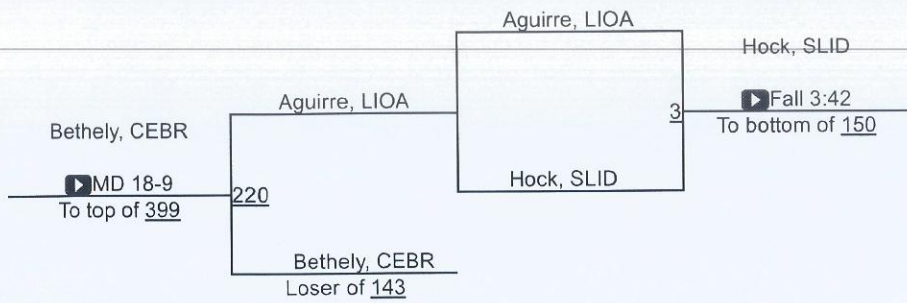
LOUISIANA HIGH SCHOOL ATHLETIC ASSOCIATION

D 1157



D 1157



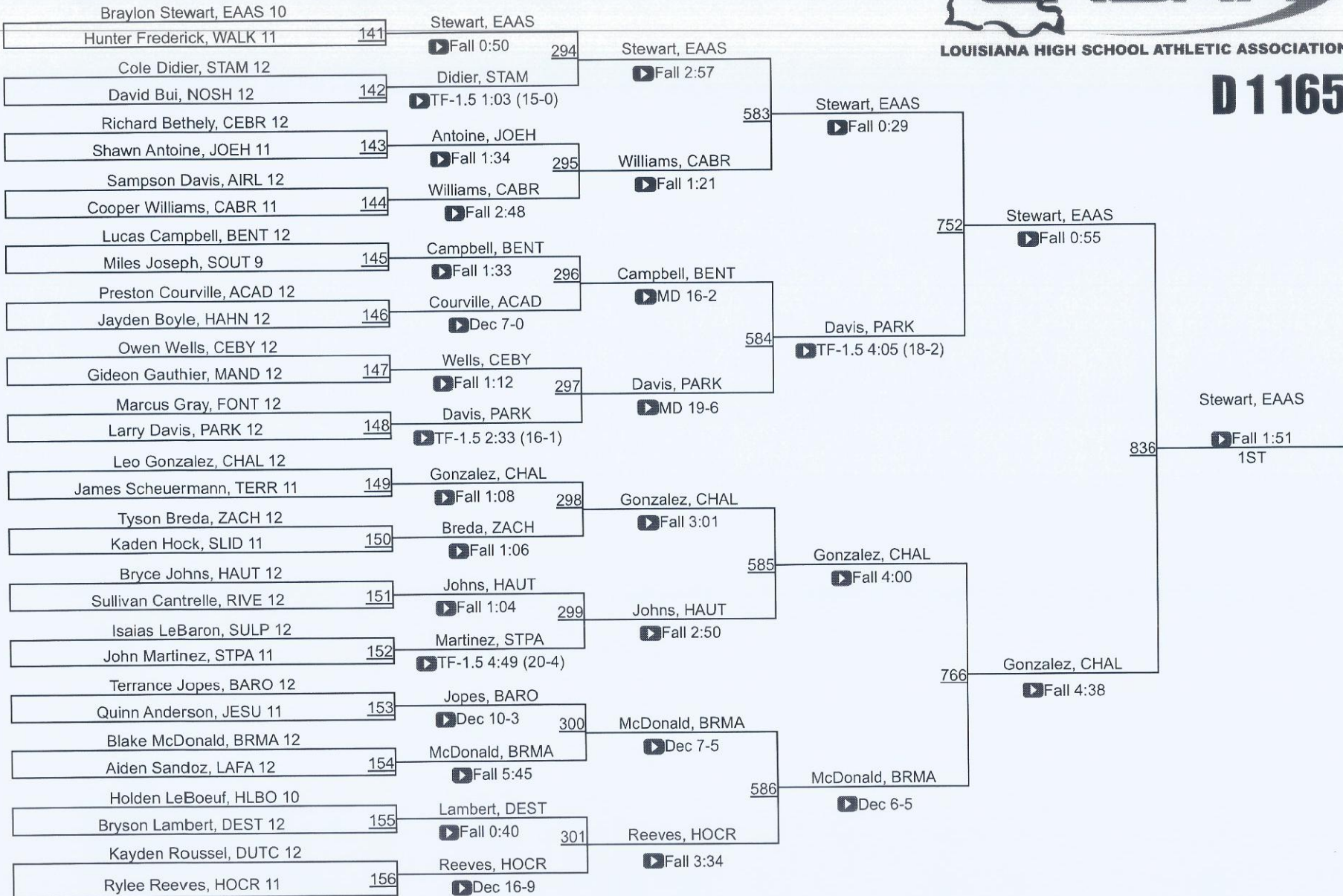


LHSAA State Championships

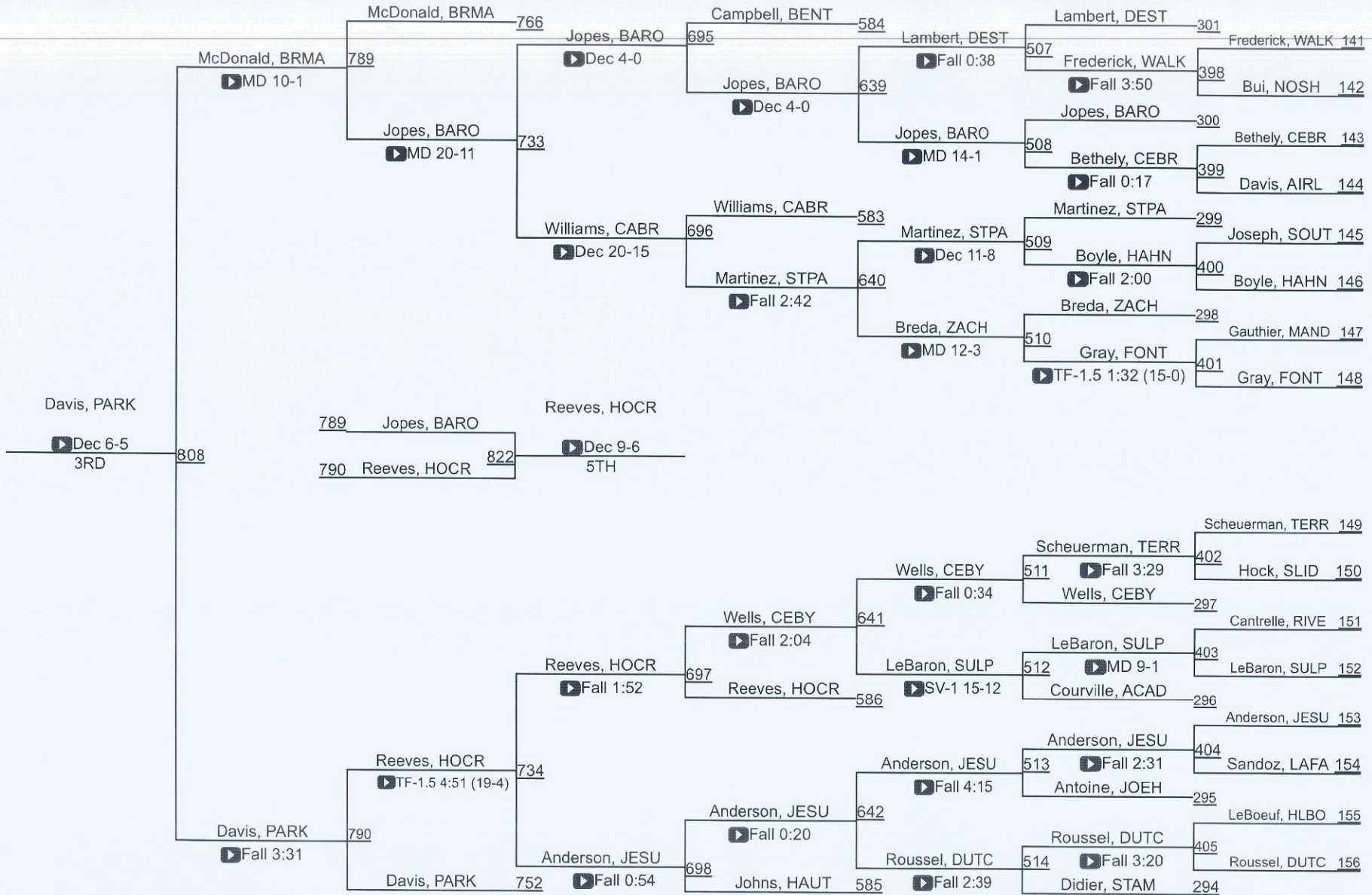


LOUISIANA HIGH SCHOOL ATHLETIC ASSOCIATION

D 1165



D 1165

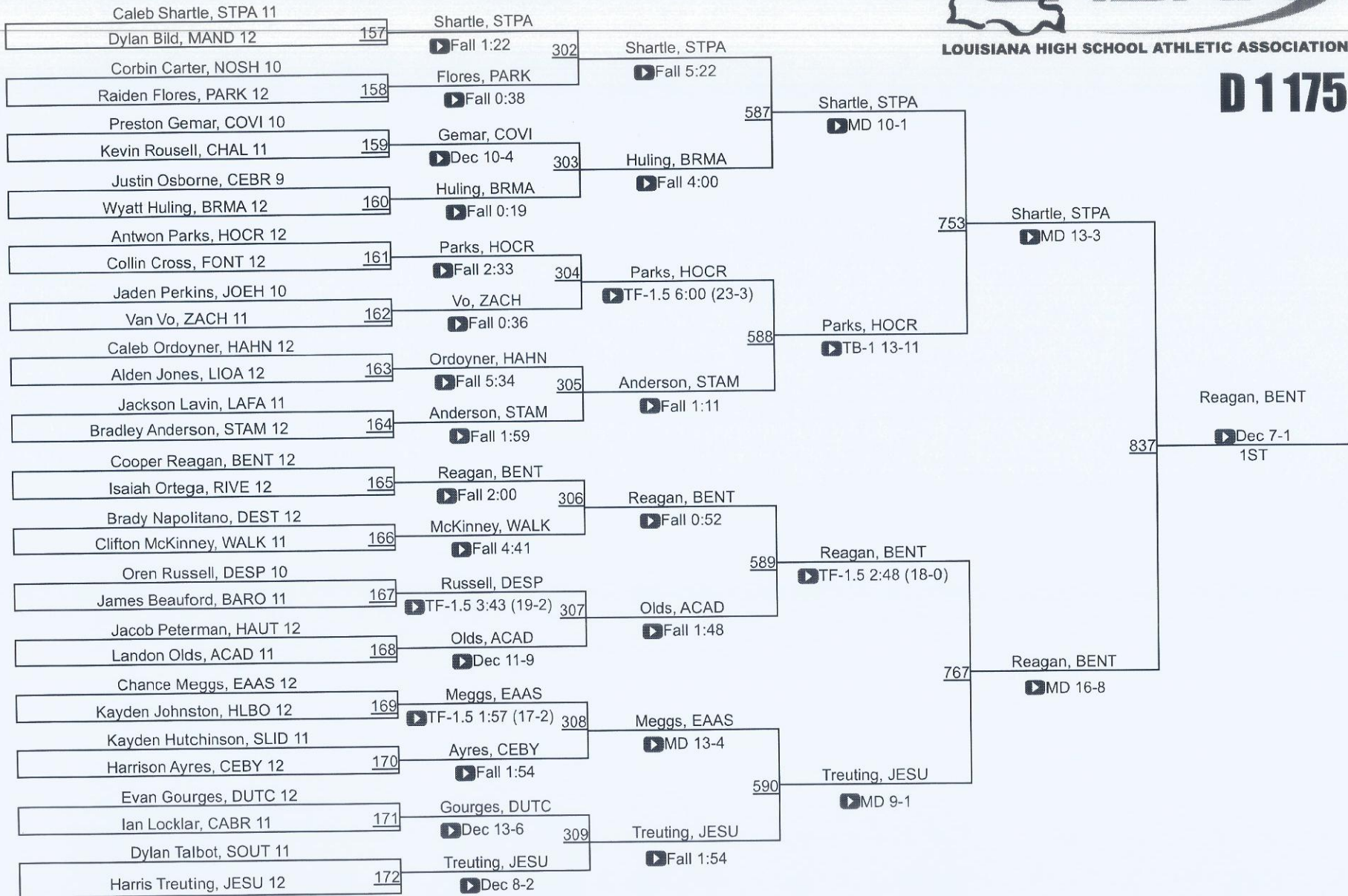


LHSAA State Championships



LOUISIANA HIGH SCHOOL ATHLETIC ASSOCIATION

D 1175

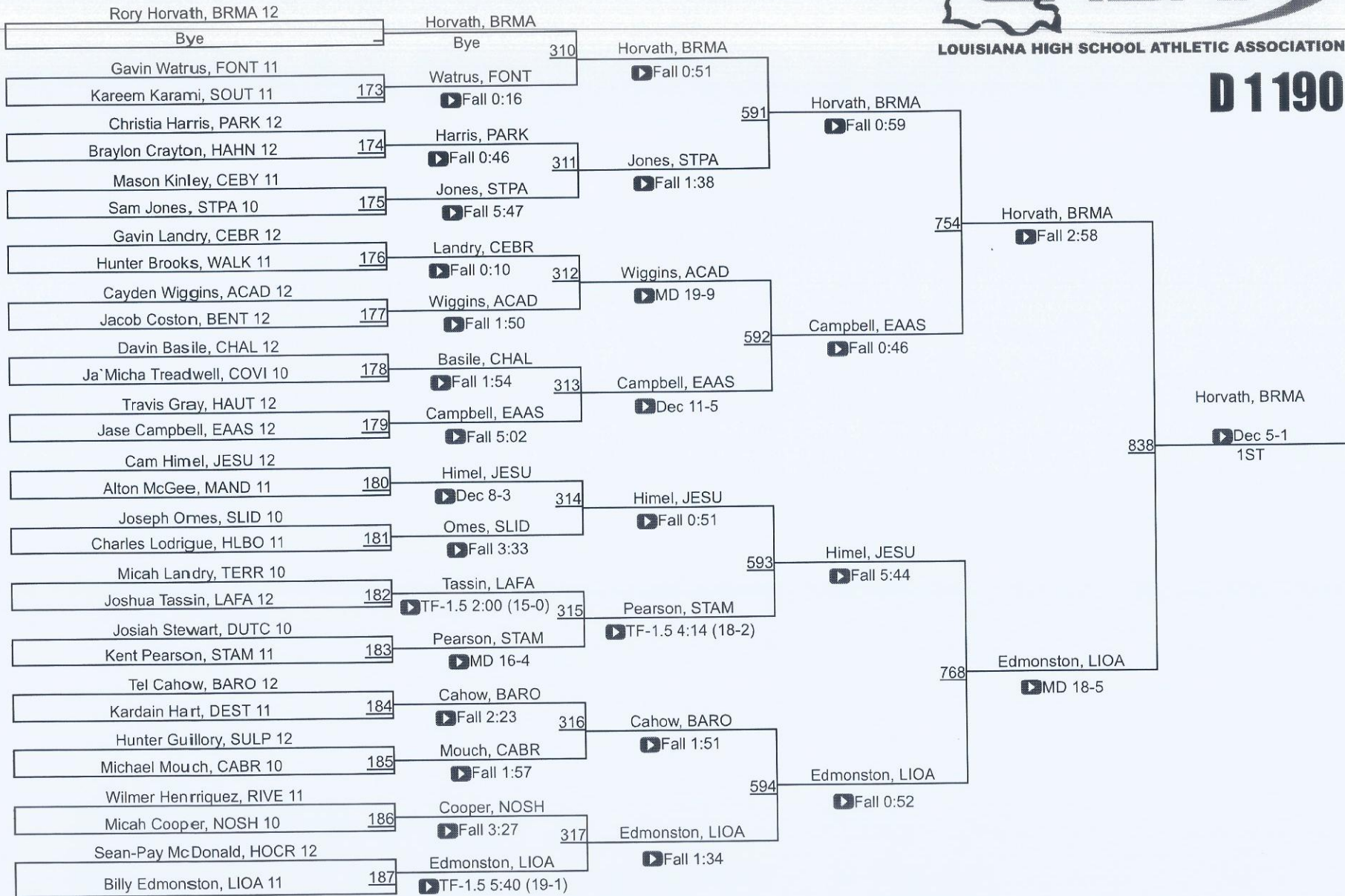


LHSAA State Championships

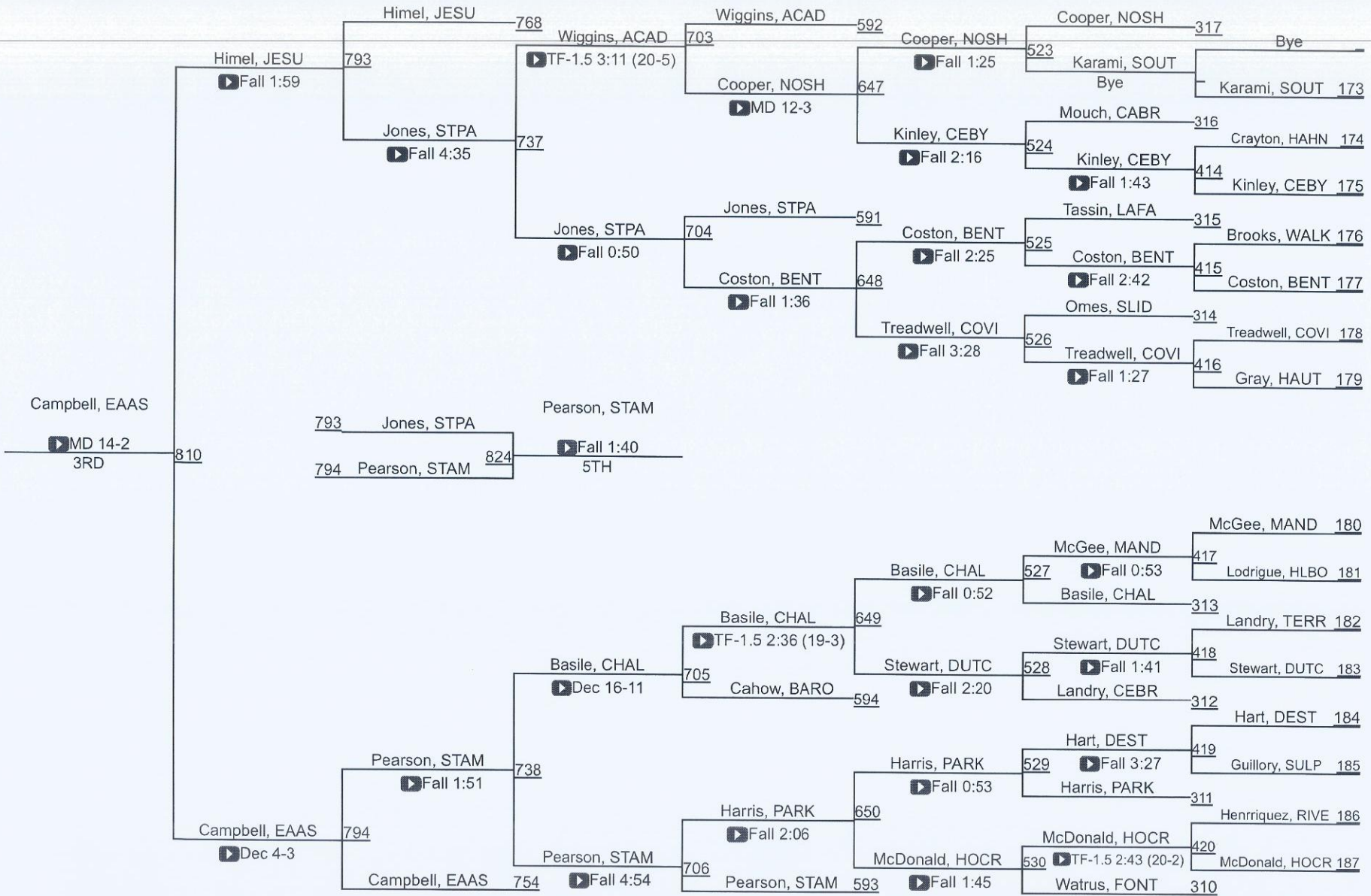


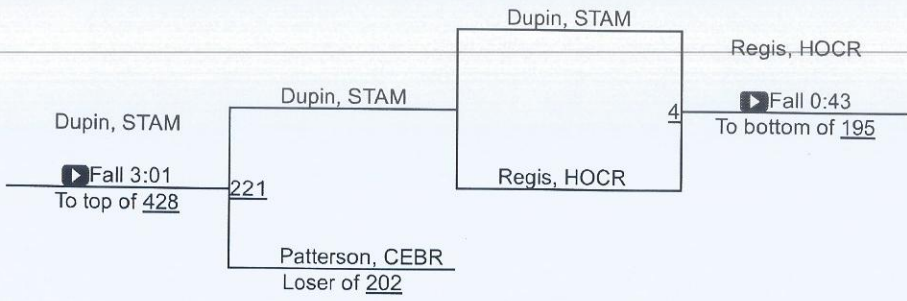
LOUISIANA HIGH SCHOOL ATHLETIC ASSOCIATION

D 1190



D 1190



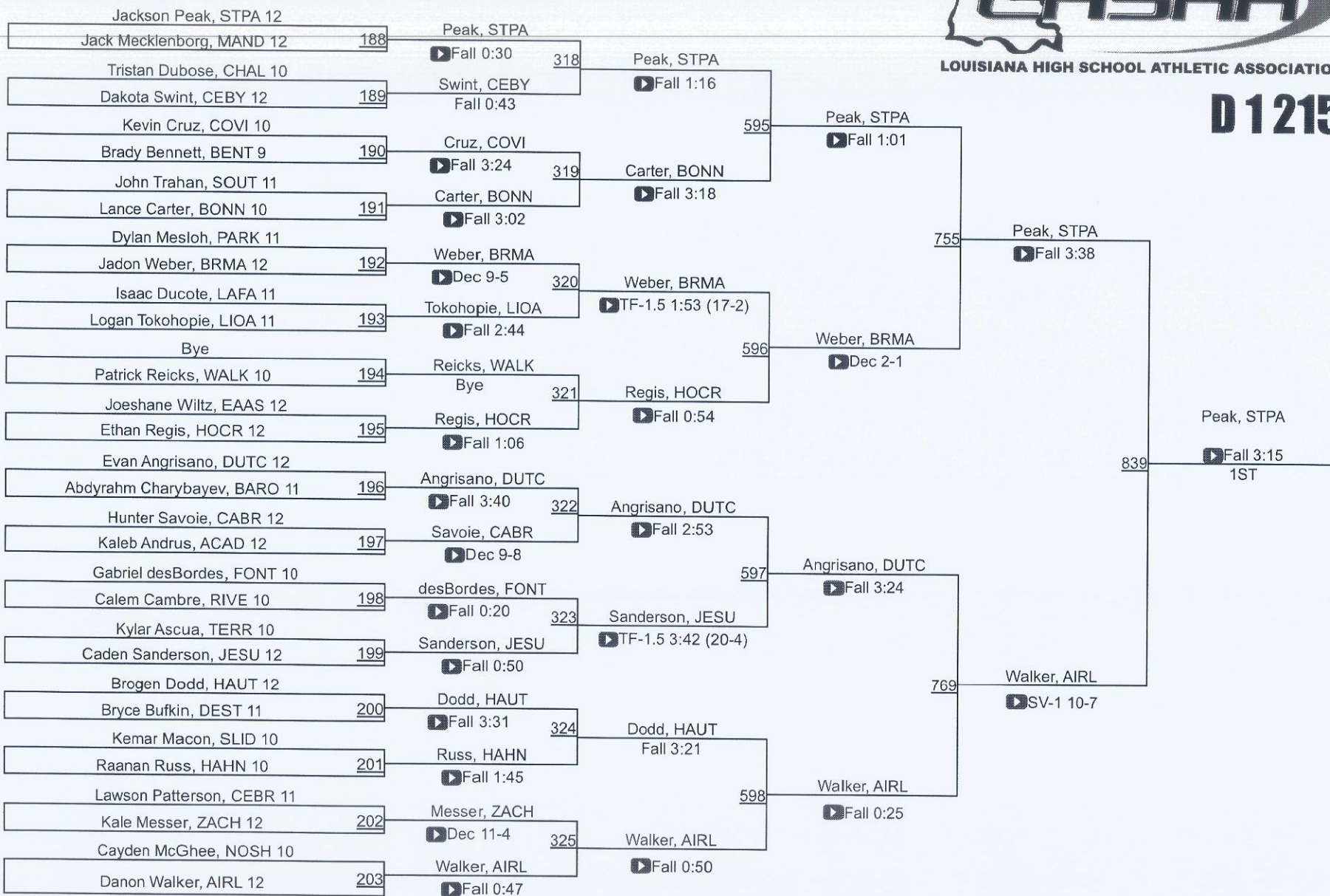


LHSAA State Championships

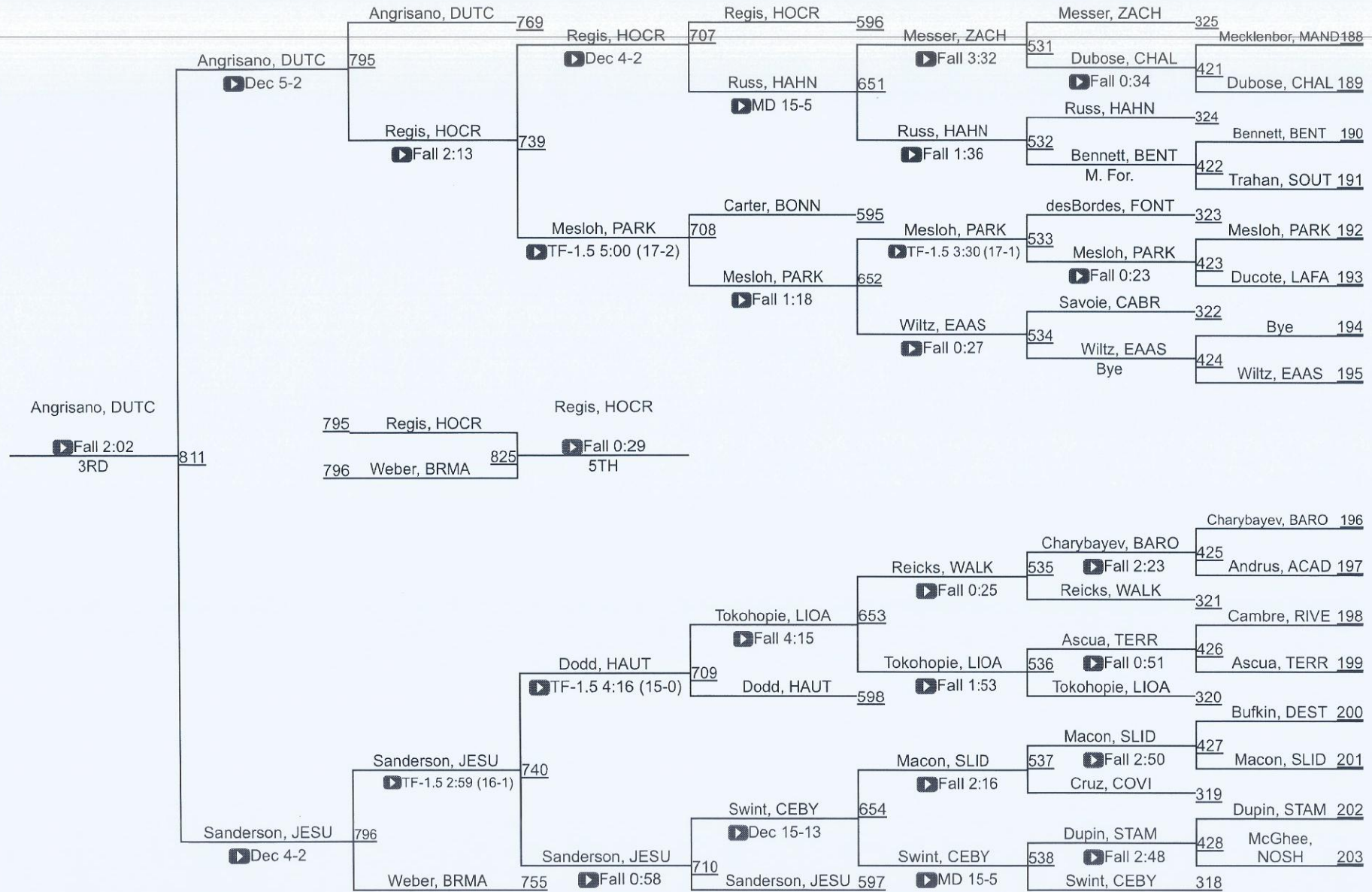


LOUISIANA HIGH SCHOOL ATHLETIC ASSOCIATION

D 1215



D 1215



LHSAA State Championships



LOUISIANA HIGH SCHOOL ATHLETIC ASSOCIATION

D 1285

